

Rolvenden & Newenden *Parish Magazine*

2024
SEPTEMBER
ONLINE





Parishes of Rolvenden and Newenden

Team Rector	The Revd Canon Lindsay Hammond tentvic@gmail.com	01580 761591 07805 840493
Team Vicar	The Revd Jeanette Kennett `caulkhead7@talktalk.net	01233 758250 07888 998874
Assistant Curate	The Reverend Andrew Tapsell revandrewtapsell@gmail.com	07401 287873
Reader	Judy Vinson judyannvinson@gmail.com	01580 241504

St Mary the Virgin, Rolvenden

Churchwardens	Tim Cole timjamescole@hotmail.com	01580 241154
Hon. Secretary	Ann Paddick	01797 252334
Hon. Treasurer	William Barham	01580 240852
Sacristan	Elizabeth Marshall	01580 241529
Organist	Geoffrey Davison	01580 241685
Bellringers'		
Assoc. Captain	Linda Smith	01580 241783

St Peter, Newenden

Churchwardens	Frances Jones frances@peri.co.uk	01797 252563
	Hugh Edmonds hfedmonds@outlook.com	01797 252196
Hon Secretary	Vacant	
Hon. Treasurer	Jonathan Kempton jonstpeters@gmail.com	
Sacristan	Rhoda Smith	01580 292041
Magazine Administration	Judy Vinson judyannvinson@gmail.com	01580 241504

Published by Rolvenden P.C.C.

Newenden Duck Race 2024 by Anthony Dawson



This month's letter comes from Rev Joy Rapley
From the Minister's Desk

Earlier this year, I travelled to St Albans for a special event. It was for a service at the cathedral to celebrate something that happened there thirty years ago, on April 23rd. 1994. This was the occasion when sixty-two of us, who were all serving in the diocese as deacons, were ordained as priests. Why so many of us? It was because we were all women! Until that time, women were not allowed to be priests in the Church of England. In 1987, for the first time, women could be ordained as deacons. (I became a deacon in 1989.) Before that women could serve as accredited lay ministers or deaconesses.



But in 1992, after a long struggle, and many setbacks, the General Synod passed the motion that women could become priests, although not bishops. It took much discussion including a change of law through parliament, before ordinations could go ahead, and the first one took place at Bristol on 12th March 1994.

Ordinations took place that year in every diocese; many women became priests that year, and many more followed in the years to come. To allow women priests to become bishops was the next step, but it took another twenty years for this to happen and the first woman to be ordained as a bishop was in December 2014. With regard to the celebration at St Albans this year; all the women ordained in 1994 have served the church for many years, and some are no longer with us; some were too frail to travel. I think those able to attend the service were all retired, but most of us still working at least part-time, and about twenty-five out of the original group were there, including one retired bishop, and we robed and processed through the cathedral as we had done thirty years ago. It was a great celebration! The Bishop of Hertford, a woman, presided at the Eucharist, and Christina Rees, who campaigned tirelessly for many years, as a laywoman, but who eventually was ordained, preached an inspiring sermon.

In those earlier days, as now, it was a great honour and privilege to be ordained, but it was also a struggle, and we faced being ignored and rejected on more than one occasion. But we stuck with it! The way to get things changed was to be there and to be seen! We always believed that God was on our side.

Nowadays, most people take it for granted that women are equal with men, and that there is no reason why they should not be priests or bishops, but it makes me sad that a minority of people still find the priestly ministry of women unacceptable. They are entitled to their opinion, of course, but it is my hope and prayer that, in time, they will change their minds, as many have done, because, "There is neither Jew nor Greek; there is neither bond nor free; there is neither male nor female. For you are all one in Christ Jesus."
(Galatians 3.28)

Joy Rapley



St Peter and St Mary Flower Rotas August 2024

Sunday	St Mary	St Peter
Sept 01	Sylvia K	Caroline Anderson Jones
Sept 08	Sylvia K	Janet Broadbent Kempton
Sept 15	Elizabeth Marshall	Janet Broadbent Kempton
Sept 22	Elizabeth Marshall	Hazel MM
Sept 29	HARVEST arrangers	Hazel MM
Contact:	Sylvia Kellett 01580 240463 SylviaKellett@eplusmail.com	Rosie Edmonds 01797 252196 rosie.edmonds@hotmail.com

Brass Cleaning at St Mary: Jenny Field

St. Peter's Church: normally open between 10.00 and 5.00pm. If you need access outside of these times, please contact Frances Jones or Rosie Edmonds. Should arrangers be unable to do any slots please swap with someone else and let Rosie know.

❖ From the Registers ❖

Funeral

20th August – Malcolm Jones – St Richard's Heathfield

Memorial Service

16th August – Gordon Briley at St Mary's



Subscription Payments

Thank you to the readers of the printed Magazine who have paid your annual £10 subscription.

If you have not got around to it yet, the easiest way is to make a BACS payment. See below for details. Please make sure you add your unique reference: your initial and surname +sub24

If you do not do online banking and have lost the envelope with the instructions, please give me a call on 01580 241504, and do leave a message if you get the answer machine. Thank you.

Bank details:

- Payment to 'PCC of St Mary the Virgin Rolvenden' CAF Bank,
- Sort Code: 405240
- Account Number 00030089
- And remember to insert your unique code

Judy V



The Passing of Cornex

My first memory of Cornex actually comes from Newenden. It was the Cornex minibus driven by Mr Tunbridge senior - not the young one who still lives in Rolvenden today-his Dad, who came down to Newenden each school morning to collect the children and take them to Sandhurst School. And he brought them back again in the afternoon.

Successive Cornex regimes have looked after my motoring needs and helped with the daunting business of 'changing the car'. Derek Tunbridge, Dave Hook and now Richard Smith not forgetting the supporting cast of mechanics and assistance playing their part for all of us down the years.

Do we call the closure of the Cornex the end of an era and mourn its passing. Or do we accept that it was inevitable and let it go?

How many Cornex customers regret the passing of the serving of fuel and topping up of everything else, including getting the right amount of air in each tyre? I am sure I am never going to master tyres. Do we regret that something 'very near' has become 'the nearest' that is further away? And will people take all their lawn mower cans to the supermarket when they go for the big shop? When the car is loaded with groceries, where will the cans of fuel be put?

There is something else the village loses. The garage, like the Village shop and the pub is a place where news, not just gossip, gets exchanged. And where signs of 'trouble at home' might get picked up and concerns passed on to someone who could help. We've replaced it with social media but I am not sure that gets at the subtleties of neighbourly caring quite as well. Perhaps we have to get smarter at seeing and valuing the roles played by our remaining village institutions, shop, pubs, school, sports clubs, the village hall and church for instance. And perhaps we have to be more dedicated and diligent in how we use them.

Judy V



CORNEX GARAGE
ROLVENDEN



New details
awaited from
Richard



The Church of England

IN TENTERDEN, ROTHER AND OXNEY SERVICES IN CHURCH AND ONLINE DURING SEPTEMBER

Sunday 1st September: Fourteenth Sunday After Trinity

9.30am St Peter's Newenden The Eucharist <i>6pm Patronal Evensong Stone</i>	8am St Mary's Rolvenden Holy Communion 11:00am St Mary's Rolvenden Celtic Morning Prayer
---	---

Sunday 8th September: Fifteenth Sunday After Trinity

9:30am St Peter's Newenden The Eucharist <i>6pm Said Evensong (Tenterden): Live streamed and online thereafter</i>	11am St Mary's Rolvenden The Eucharist
--	---

Sunday 15th September: Sixteenth Sunday After Trinity

9.30am St Peter's Newenden The Eucharist 2pm St Mary's Churchyard Forest Church <i>6pm Choral Evensong (Tenterden): Live streamed and online thereafter</i>	11:00am St Mary's Rolvenden Matins
--	---------------------------------------

22nd September: Seventeenth Sunday After Trinity,

9.30am St Peter's Newenden Celtic Morning Prayer <i>6pm Sung Evensong (Tenterden): Live streamed and online thereafter</i>	11am St Mary's Rolvenden The Eucharist
--	---

Sunday 29th September: Eighteenth Sunday After Trinity, and Harvest Thanksgiving

9.30am St Peter's Newenden Celtic Morning Prayer <i>6pm Churches Together in Tenterden Ecumenical Evensong (St Andrews)</i>	11am St Mary's Rolvenden Celtic Morning Prayer for Harvest
---	---

And services during the week:

Beginning the Day with God

A ten-minute reflective service, **online only** from Monday to Saturday.

Ending the Day with God

A ten-minute reflective service, **online only** from Monday to Saturday.

Holy Communion

Will be celebrated at St Michael's every Wednesday and at Tenterden every Thursday. Both celebrations will begin at 10am and last about twenty-five minutes

These services will not appear online.

To access our daily online worship visit:

YouTube St Mildred's, Tenterden

<https://www.youtube.com/channel/UCBAbfTcsSiiq4HALM0GRdWg>

Online services:

can also be accessed through the daily bulletin, **Connect Up!**

To receive Connect Up!:

Please visit our website: www.tentroxchurches.co.uk

**CALL FOR OUR
LATEST BROCHURE**



**PRIVATE CARE
TAILORED TO
SUIT AN
INDIVIDUAL'S
EXACT NEEDS**

Our aim is to help people to remain in their own homes for as long as possible and to assist those who need help due to frailty, disability or illness to live as independently as possible with comfort and dignity.

Our Private Care Service is able to provide a package of care, tailored to suit an individual's exact needs. This could give you or your relative many more years of living at home, at a fraction of the cost of living in a care home.

*Our staff are all DBS checked, fully trained and can help with both
Personal Care and/or Domestic Care.*

We welcome Service Users who are privately funding their care as well as Service users who receive a Direct Payment or use the Kent Card.



TOWN & COUNTRY HOMECARE LTD

102a High Street, Tenterden, Kent TN30 6HT

Call today and make your life just a little bit easier: **01580 762244**



Rolvenden Primary School Community Open Day Invitation

Dear Residents, villagers & community members,
We are delighted to invite you to the Rolvenden Primary School Community Open Day, an exciting event designed to bring together our entire community to celebrate and support the future of our school. This day provides a unique opportunity to explore the plans for the school's development and see firsthand the exceptional values and dedication of our staff and students.

26th September Rolvenden Primary School

Day Session: 1.30pm - 3pm

Evening Session: 6pm - 8pm

(You are welcome to one or other, or both if you wish!)

Day Session Highlights:

- Guided Tours by our current students, showcasing our classrooms and facilities.
- Building Plans Display: Learn about our exciting new building plans, aimed at enhancing our educational environment and supporting our growing school community.



- Tea and Cake provided as you engage with students, staff, and fellow community members.
- Speech by Mr. Ben Vincer, Headteacher, outlining our vision for the future of Rolvenden Primary School.

Evening Session Highlights:

- Wine Reception with tours led by our dedicated staff, governors and members of our school community.
- Meet Our Alumni: Hear stories and experiences from former students who have thrived at Rolvenden.
- Building Plans Discussion: Explore our new building plans and see how these changes will benefit our students and the community. Discuss with staff and architects the vision and impact of these improvements.
- Q&A Session with Mr. Ben Vincer, providing insights into our goals and the importance of community support in realising our vision.

Join us in our mission to enhance the facilities of Rolvenden Primary School, including improvements to the school hall and other vital areas not covered by the CIF funding. Your participation and support are crucial to ensuring that our school can continue to serve our rural community effectively.

Thank you for your ongoing support and commitment to our school community. We look forward to welcoming you to Rolvenden Primary School and sharing our plans for an exciting future.

Schools are back and so is Oasis

**Wednesday 4th September -
8:40 - St Mary's Rolvenden**

This is the space for anyone who has dropped children off at school or pre-school. We've been going since 2017. We have made just one change this term – we have moved to Wednesday. This is your space to talk about whatever you want. It is a place to bring your younger children and just chill. It is tea, coffee, biscuits and chat and maybe just the place to find answers to the things that are bothering you.

You can stay for the whole session or just five minutes, if that is all the time you can spare. No matter how long, you will be very welcome.

Judy V





Friends of St Peter's

The weather and the river came up to expectations for the Friends' Annual Cruise, as you can see. We would love to have more members to join us. And the annual excitement of the Duck Race is over. We can report that 363 ducks took part in the float and the winning number was 238, sponsored by Ian Woodcock.

The flock is now back in the dark and resting. Thank you to everyone who supported this key fundraiser and/or helped on the day.

We are now turning our attention to the series of talks to see us through the darker months. It is the same format as last year: noon, on the first Thursday of each month, there will be a talk in St Peter's lasting about 45 minutes. The topics will be wide ranging. We aim to choose subjects that will intrigue, inform and entertain in equal measure. So far we have the first three firmly booked:

October 3rd – Visit To Grandmother 1957 – Judy Vinson (more details on the adjacent poster)

November 1st – A History of Women in Science to 1900 – Nick Hudd, a medical man with a love of history and for us a popular returning speaker.

December 5th - The investigation into the 1997 murder of Hastings teenager, Billie-Jo Jenkins – Ray Fysh, another returning speaker with memories of his work as a forensic scientist for over 40 years, the last fifteen of them as a Specialist Adviser (Major Crime).

Next month we should be able to give you advanced notice of the February and March talks – we do not have one in January.

As we complete this report it is not at all clear what will be happening with Newenden bridge in the coming months. We very much hope that our visitors will make this an opportunity to dine in Nibbles or the White Hart. **Alan Seal**



Friends of St Peter's Church Newenden
First Thursday Talk
12 Noon Thursday 3rd October 2024
in St Peter's Church, Newenden



Visit to Grandmother
1957

given by

Judy Vinson

Aged 11, Judy flew alone to Ceylon to spend the summer holidays with a grandmother who was a very occasional visitor to the UK. 7 weeks became 6 months and introduced her to a very different lifestyle. As an adult she can appreciate the unique nature of the time, post-colonial but pre-tourist. As a child it was just an amazing experience.

The First Thursday talks last for about 45 minutes. Entrance is free but the Friends welcome donations.

And after the talk you might like to have lunch at the White Hart Inn or at Nibbles.

Please note, the White Hart car park is for patrons of the pub – you can come to the talk and then patronise the pub, but, to avoid a fine, please do remember to drop into the bar and register your vehicle before you come across the road to the church



Friends of Newenden Meadow

We launched the Friends of Newenden Meadow, on 31st May at a meeting in St. Peter's church where we displayed the 'story of the field', and talked about what we hoped to achieve in the future. Many of the people present signed up as members of the Friends and we have continued to grow since. We now have 27 members and are aiming to double that by the end of the year. Please tell your friends and encourage them to get in touch.

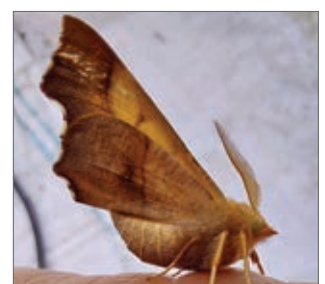
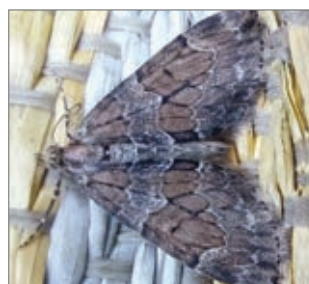


*The Directors of the Newenden Meadow Charity:
Michael Jones, Jacky Lamb and Jillian Eldridge*

The Meadow isn't just a place to look pretty. We are playing our part in improving the biodiversity across the country. That is why we keep tabs on the cycles of bee life. Between March and October, we walk two transects to count bumblebee numbers and to note the species and how many queens, workers and

males. This information is added into a national data base and records how bumblebees are faring over the country as a whole. The lack of numbers this year has been disappointing, but now the second generation are appearing. The new queens will build nests and can forage on the many flowers available, then lay eggs and workers will emerge to collect nectar and pollen to feed the larva. The cycle begins again, and we hope good weather will help them succeed, so look out for bumblebees disappearing down among the grass, or under the garden shed and you may well have found a nest.

***If you would like to become a member please email:
info@newendenmeadow.org***





ROLVENDEN & DISTRICT GARDENING SOCIETY

Autumn Show

7th September 2024

ROLVENDEN VILLAGE HALL

OPEN 2.30PM

PRIZE GIVING 4.00PM

Showing home grown vegetables and flowers.
Also a section for cookery, flower arranging
and a children's section

SOMETHING FOR EVERYONE!

Raffle | Tea/Coffee | Plant Sale



Weather and Nature Notes

July rainfall managed to total 56.5mm mostly thanks to one day early in the month that produced 20mm of rain, an amount that would penetrate into the soil and do some good, otherwise the showers were quite light. Summer heat with high humidity arrived that was fortunately not too prolonged before more comfortable temperatures returned. Another hot and humid spell then brought a thunderstorm with plenty of lightning and thunder but little in the way of rain for the start of August. A rollercoaster weather pattern of heat and then back down to average temperatures seems to be with us for now. My last sighting of any swifts was on the 5th of August, four drifted through on their journey back south as meteorological Autumn looms. With the rise in temperatures came an increase of butterflies in my garden, nothing outstanding, but a big improvement on the week or so previous when at times the garden was rather devoid of them. Comma butterflies seem to be having a good year in my garden and I have found their caterpillars on my nettles.

Gill Pooley sent me this picture of some quite large beetles that had been appearing around her windows and house. It transpired that they had been attracted to a dead squirrel in her chimney that was removed which disturbed



them. They were two varieties of Sexton beetle, an all black variety and a black and red one. Reading about them was interesting, when they locate a small dead creature with their excellent sense of smell, they will dig a hole underneath it for it to fall into and become buried, thus the Sexton beetle name after the caretaker of a graveyard. They then feed on it and lay eggs, and unlike most insects they will then stay around to care for the larvae and feed them. It may sound a little unpleasant, but they are performing an important service. Behind the scenes a clean-up crew of unappreciated and generally unpopular creatures like flies, crows, slugs and many other creepy crawlies and fungi are constantly breaking down dead flesh or vegetation providing nutrients to feed the soil which is the foundation of an ecosystem, nature is very clever. Scientists have studied space more than the soil on our own planet, they are now understanding how complex and important it is.

Whilst removing an old plant or two I quickly found a handful of brown lipped banded snails, these molluscs are very variable in their shell colouration and banding. They can have no dark bands or up to five, and their main colour can be yellow, brown or pinkish. I vaguely recalled a wildlife programme featuring some snails from some far-flung land and how what they ate affected the colouration of their shell, so I was wondering if that may be the case with these? After a bit of research, it appears not so. They have natural variation, and there have been many studies on the subject. Experiments cross breeding them and studying their genetics reveals that the brown colour form is dominant over the pink which is dominant over the yellow. Unbanded shells are dominant over banded, and a single band is dominant over a five band variation. According to these genetic findings only brown unbanded forms should occur. Interestingly you then have to take into account predation, thrushes for example hunt by sight and these variations work better in different environments, so probably a banded yellow snail would camouflage better in a light grassy area and brown snails in leaf litter. As you can see by the photo I have a nice selection including



five banded yellow ones which have quite a few recessive genes. Who knew these pretty little snails were so interesting and also like the sexton beetles and flies etc are processors of decaying matter, these banded snails rarely eat live plants preferring dead vegetation. I am happy to see them in the garden and they in turn are food for other creatures.

Hazel Beaney



Tenterden Singers

Come & join us for
that feelgood feeling!

Tuesdays
7.45pm to 9pm
Tenterden

Friendly choir singing 4 part
harmony

For more details
www.tenterdensingers.com
07814 657778

*An eclectic mix of music spanning the eras
Baroque to Bebop,
Classic to Contemporary*



Summer news from Rolvenden Pre-School



As I write this it is the middle of the summer holidays and all at Rolvenden Pre School are enjoying a well-earned rest.

As you read this it must be September, and the new term will have started. Of course, even during the holidays there is plenty going on behind the scenes to make sure that when the children return to us for the new school year, we are ready for them. It is always an exciting time of year, seeing how those returning to us have grown and getting to know the new children joining us for the first time.

Just before we broke up in July, we had an Ofsted

inspection and we are incredibly pleased to say that they have graded us 'Good' in all areas. This reflects the hard work, dedication and support of our staff, committee, families and children. We will continue to strive to offer the best care and education that we can for all children at Rolvenden Pre-School.

We are confident that the children leaving us for Primary School will all go on to achieve great things and that those with us for the coming year will delight us with their energy and enthusiasm for learning. We are all students of the universe and every day can be a school day if you remember to look at the world through the eyes of the children.

The photo shows the children uncovering our homegrown potatoes, which were dug up and buried to be dug up again multiple times over as they immersed themselves in the joy of the experience!

*facebook@rolvendenpreschool or
email us on rolvendenps@gmail.com.*



NEWENDEN



NOTES

This month, to conclude the current series of Newenden Notes, Jane and Anthony Dawson sat down with Judy Vinson.



The course of Judy's life has not been straightforward. Born in St Paul's Cray Cottage Hospital, she spent her first 24 hours in an airing cupboard because the hospital had no incubators. She comes from a farming family. Home had spare bedrooms and a large kitchen table, always available for anyone needing somewhere to live.

Aged 5, Judy spent 3 months in Orpington Hospital with rheumatic fever. Then TB was diagnosed. Following antibiotic injections, fresh air was prescribed. Judy's father built a makeshift outdoor room in the back garden providing lots of fresh air. She spent a year out there in bed, cared for by her mother, a trained children's nurse. Judy's memories of that year are almost non-existent. There was a radio, there were teddy and a dolly, somewhat damaged from having shared the injections. But no reading, that was a skill still to be learnt. Once back in the house, Judy remembers learning to walk again by hanging on to the furniture. She recalls the complete freedom of a farm childhood, with barns to play in and woods to explore. Mahjong became her favourite game. There were still plenty of adults staying with stories to listen to around the kitchen table.

Brother Guy was born when Judy was 10. Around then Judy's grandmother, who lived in Ceylon (Sri Lanka), invited Judy to stay. She was packed off, alone, on a BOAC Dakota. 30 hours and 9 stops later she displeased her grandmother by emerging last from the plane with her shirt untucked. Granny was head of a large school, so basic education was covered for six months, and she had an amazing introduction to a beautiful country, before it had tourists.

Back in England there was growing anxiety over family finances. At 13 Judy switched from private to public education. With hindsight Chislehurst and Sidcup Grammar School was a good move. But, finally the Bank pulled the plug, the family farming business was reorganised. Her Dad's was the salary that stopped, her childhood home was the one that was sold. Taking a pub was the solution, arrival in October 64 at The White Hart, Newenden was the result.



Meanwhile, Judy went up to Sheffield University where she obtained a combined degree in French, European pre-history and Biblical history and literature. After that Judy came home to Newenden, wondering what to do with her life. She helped out in the pub. It was a great place to be in the late 60s.

Money also had to be earned. Flat living in London was tried, and found wanting. There was an 18-month stint at The Design Centre. It was interesting and fun but travelling from Newenden daily proved too much. Judy went back to the pub and a daytime job with estate agent Geering and Colyer.

In 1972 another change, Judy accepted a post with Tunbridge Wells Hospital Management Committee in the supplies department. For 25 years she bought many different items. The highlight came when she was based at the Regional HQ, in the section responsible for national contracting for X Ray equipment. Tucked into the portfolio was the annual routine exercise of scheduling the order for replacement radioactive Cobalt-60 sources for Radiotherapy machines. As a student she had learnt about radioactive dating in her prehistory course. The term 'half-life' in a chance conversation with a medical physicist caught her attention. Judy found herself working out and pushing through a scheme for higher value sources to be passed on to hospitals requiring a lower value source, rather than buying a new source. She obtained the co-operation of the monopoly supplier - the scheme would only work if the firm would undertake the hazardous handling and transporting of the handed down source. Then she had to persuade participating Regional Treasurers they were getting a fair share of the savings. Her work was recognised in the NHS Annual Awards for Innovation which came with £100! She was also in the right place to be part of the small team that negotiated the contract giving Kent its first Air Ambulance.

Under Maggie Thatcher NHS Supplies changed. Judy found her role radically altered, job satisfaction gone, but, having hit 50, she was offered a generous early retirement package. By now she was churchwarden in Rolvenden, but she missed having a job. She started 10 hours a week with a small consultancy in High Halden associated with a US Psychometric Testing company. Telephone and fax were replaced by the internet and whilst sitting tight in Kent, Judy worked with people all over the world. It became a full-time job for 16 years and taught her a lot about personality.

Judy had moved into Rolvenden Layne in 1974. She put down roots. Church, weekly stoolball through the summer, management of the Village Hall and a stint as a parish councillor followed. After her Father's death in 2004, Judy started to pay attention to the voices, internal and external, prompting her to explore a vocation to ministry. Under the guidance of Jacques Desrosiers, she was accepted for Lay Reader training.

It's 12 years since she donned her badge of office, a blue scarf. She ministers in Rolvenden and Newenden, one of the team there for both regular worshippers and the wider village communities. Life includes leading Sunday services, school assemblies and much besides. She also edits this magazine, which she has developed over the years into a professional publication, read online all over the world. *Anthony Dawson*



This month we are taking a trip down memory lane to Lock Down and the task that Lavinia and I set out to produce a collection of recipes that were in turn trips down memory lane for those who generously supported the project by providing the recipes.

FOOD, GLORIOUS FOOD!

Stew



(serves 4)

For the base:

500g stewing steak, cut into 3cm cubes
2 tbsp oil
1 large onion, roughly chopped
1 stalk celery, roughly chopped
2 tbsp plain flour
1 litre stock (any kind). If you have an open bottle of wine, use some of that to make up the litre of liquid.
Worcestershire sauce, a few shakes of the bottle.
1 tsp dried oregano or thyme

The veg:

4 carrots, roughly chopped
1 swede, roughly chopped
2 parsnips, roughly chopped
16 small potatoes, scrubbed.
(Chunks of larger potatoes are just as good.)

Method:

■ In one big ovenproof pot (big enough to fit all the ingredients) heat the oil and brown the meat. Then add the onions and celery and stir until they are softened. Add the flour and the herbs. Keep stirring for a couple of minutes. Now add the stock. Keep stirring gently and bring to a simmer. Add Worcestershire sauce.

■ Cover with a lid and cook at a very low temperature for as long as possible. I often put the pot in the bottom of the Aga for seven or eight hours, but an hour of simmering would suffice.

■ Add the chopped veg. Cover, and bring it all back to a lively simmer for approx. 30 minutes or until the veg are cooked.



- If you wish, just after adding the veg, you can lay shredded cabbage or suet dumplings on the top of the stew - they will cook nicely in the steam.
- If you're really hungry, serve with crusty bread.



Hasselback Potatoes

Ok here's one that mine love, it's sort of a jacket potato but more complicated. It is named after the Hasslebacken Hotel in Stockholm.

Ingredients

- 4 baking potatoes
- 4 tbsp olive oil
- 2tsp paprika
- 2tsp onion powder
- 1tsp garlic powder
- 1tsp ground ginger
- 1tsp oregano
- 0.5 tsp cayenne pepper
- 0.5 tsp salt
- Cut slices almost all the way

through potatoes, 2mm apart, all the way along potato

- Drizzle with olive oil and sprinkle on spices and wrap in foil
 - Unwrap, pour on more olive oil
 - Bake again for 30 mins more, unwrapped
- Delicious, serve with beans and sausages

Mum's Secret Treat

For using up that bit of left over pastry.

Roll out pastry into a more or less round shape and quite thin.

Leaving a clear edge, place dried fruit, brown sugar and knobs of butter on half the circle.

Run a milky finger around the edge of the circle.

Fold over the empty half and press the edges together tightly.

Crimp with a fork and dab some more milk on the top.

Place on a baking tray and put in medium oven until the pastry is cooked. Eat as soon as you can, before anyone else turns up!



U	I	R
N	E	C
A	S	N

Get those little grey cells working

See how many words you can make out of these 9 letters.

Two rules: Only use each letter once in a word and you must use the middle one.



Only On a Sunday...?! Part Five - Thursday

Jeanette continues her walk through a typical clergy week: this is Thursday.

Within our team, Thursday is a day off for Andrew and Caroline. It is also the day on which Lindsay and I turn our thoughts to Sunday worship.

With the exception of the Tenterden midweek Communion which takes place today, we try to keep Thursday as clear as possible to focus on putting together our services for Sunday. We are fortunate that some of our retired clergy take a turn to lead the midweek communion and we enjoy the chance to catch up with them when they pop in to the office. In addition, it is the day on which Tenterden PCC Standing Committee, the St. Mildred's Transformation Group and Wittersham PCC have their meetings – but these are each approximately every two months.

So, what is it that we do? Well, the Sunday worship is perhaps one of the most important (if not the most important) parts of our week. It is the time each Christian sets aside to come together as the body of Christ and to offer prayers and worship. The words with which we worship are known as 'the liturgy'. The word 'liturgy,' literally translated, means 'the work of the people'. So, the liturgy is very much what we do together during our worship.

Our services offer the chance to honour the memory of Christ's life, death and resurrection; to pray for the Church, our communities and the world in which we live; to offer praise to our creator God; and to be 'refuelled' for the



work of the Kingdom that we share.

On Thursday Lindsay and I are privileged to spend our day putting together the liturgy. It is a task we both enjoy very much. We have some excellent resources to hand to help us create everything from The Eucharist to Celtic Morning Prayer; Book of Common Prayer Evensong to All Age worship. Although there are prescribed sequences for the services, there is a lot of flexibility to add variety to that prescribed order. From the form of our Act of Penitence to the words introducing the peace; opening prayers, closing prayers, Eucharistic Prayers; the type of 'acclamation of faith' (creed) – and so on, all these can be varied.

There are elements that we have to use for the particular Sunday of the year – namely the readings, the collect (a themed prayer that usually precedes the readings) and the post-communion prayer. Some things have a 'seasonal' element (Lent, Christmas, 'Ordinary time' etc) from which we make our choices and at other times we are free to simply create our own. This is something we particularly enjoy with services such as our Lent and Advent Reflective Services which more-or-less start with a blank sheet of paper. For the most part our churches have a bespoke service sheet each week. There are many reasons with this.

First and foremost, it gives every worshipper the opportunity to follow word for word the service they are participating in. For some people who are hearing impaired or who have memory issues, this allows them to be more easily included throughout the service. Without having to juggle a range of books and sheets of paper or turn backwards and forwards in a large book, the focus of the worship can be maintained.

Secondly, it means we can add variety and keep worship fresh and alive. Next, for newcomers, there is something that is uncomplicated to follow – and everyone can take their service sheet away with them to reflect on further or to use for their own private prayers during the following week. Finally, on those occasions where we have to dash from one service to another on a Sunday morning, being able to arrive and simply pick up a service sheet and lead the service, makes our life easier and means that the start of services can be less delayed.

Once the services are written, we can send them out to all those who are leading them and to the choir leaders and musicians, so they can be familiar with the service. We then print and photocopy them ready for The Folding Team who come in on Friday (you can hear more about them next month!). The final job for a Thursday is to prepare the Saturday issue of 'Connect Up! Extra'. There is more information to collate for this issue and it is the one that gets made into a paper copy for those without digital access. By the end of Thursday, it is generally ready for distribution!

All in all, Thursday is an enjoyable, worthwhile and satisfying day in the office!

Jeanette



Rolvenden Clock 200 - The Clock will Chime Again!

It's been a long road that we have all been down as a church and village community but I am very pleased to now be writing to you all with the news that our Rolvenden Clock 200 campaign is going to reach full completion stage in the month of September.

In June the Cumbria Clock Company engineers and rope access team visited the church for the extraction of our cage clock mechanism from the tower clock chamber and the removal and lowering of the clock dial using rope access rigging and descending techniques. The team were very efficient with their work and certainly demonstrated their experience in their specialist fields.

The cage clock mechanism and dial motion mechanism were stripped down completely, and the parts carefully removed for the restoration work at the Cumbria workshop in Penrith. The mechanisms have been repaired and fully rebuilt in the workshop for testing procedures which I have been told have gone well. We now have a fully restored system ready to be re-installed at the church.

An interesting development occurred with the clock dial restoration work that brought a welcome local touch to the overall project proceedings. Due to our clock dial's immense size for transport, it was suggested that it would be better to carry out the work at a nearby location to the church if this could be arranged.



Local clock restoration expert Anthony Gray has a business and workshop at Lambsland Farm in Rolvenden Layne where a wide range of all sizes of clock restorations take place. Anthony Gray Clocks is a long established and successful local company and Anthony has been most supportive throughout our campaign with his knowledge and connections. The offer was made by Anthony to use his workshop for the clock dial restoration which we thankfully accepted. Cumbria engineers have been on site for the strip down and re-painting work and also the full re-gilding of the numbers with gold leaf to complete the job.

So, we are not far off hearing the beautiful sound of our clock chimes again!

The re-installation of the clock mechanisms and the restored clock dial will take place this month, the exact date will be advertised online and in church. We are now coming to the end of a journey that really has been an amazing experience. When we got started on the fundraising campaign, I was struck by how much the clock meant to people in the village. How the chimes are part of daily life and how many people treasured childhood memories of the clock being part of their lives. Its condition is also a reflection of us as a village and I saw that so many people have a real sense of pride and belonging in Rolvenden as part of our local community.

When the fundraising events kicked off and the donations started coming in, the support that we were given was something else. To raise £25,000 in five months really was amazing and we can't thank the village enough for your solid and generous support for everything that we did.

It is clear to me that the Rolvenden church and village community have a wonderfully strong connection and in times where some villages can seem to be drifting apart and losing their togetherness, we as Rolvenden have something very special. The village really comes together when it needs to with some amazing characters and committed people who make us the community that we are.

Long may this continue and thank you again to all of you who have contributed so much to the success of this project.

***With Love in Christ,
Tim Cole - Church Warden***





High Weald Walking Festival

7-15 September 2024



**Explore a beautiful and historic landscape with
FREE guided and self-guided walks for all...**

highwealdwalks.org



High Weald
National
Landscape
Partnership



Sandhurst RPB 16th Memorial Charity Piano Recital



The 16th. season of Richard Beattie Davis Memorial recitals was held on Saturday July 27th. The garden party was an wonderful occasion with a fabulous pianist, Mark Viner. After expenses, we raised an incredible £781 for `Hospice in the Weald`. This means that since Richard departed, we have collectively raised over £18,000 for Hospice. Plus a few hundred pounds from a string Quartet at St. Nicholas Church, Sandhurst.

The next event will be on Wednesday September 11th. at the earlier time of 2pm. Tickets, in advance only, are available from Gillian Davis 01580-850-384. The performers will be duo pianists Emma Abbate and Julian Perkins. Amongst the pieces they will be playing, there will be some MacDowell, Ravel, Schubert and Mozart.



Rolvenden History Group

Friday, 4 October 2024

**'Our World Turn'd Upside Down':
religion and revolution in mid-17th century**

Rolvenden

Dr Rebecca Warren



From the abolition of the bishops and Book of Common Prayer to the emergence of extreme religious sects, the two decades of the 'puritan revolution' changed the religious and social life of Britain forever. This talk looks at these changes through the experiences of the church and its parishioners in Rolvenden: What happened to traditional religious worship? Who was affected? And how did Rolvenden and the surrounding communities embrace - or reject - the new-found freedom to worship in new ways and new places, that was ushered in by Oliver Cromwell?

Venue: St Mary's Church, Rolvenden

Coffee and biscuits

7.15pm for 7.30pm start for lecture

Everyone welcome - Non-members: £4

<https://therolvendenhistorygroup.wordpress.com/>



Rolvenden Neighbourhood Watch September

Our focus this month is on communication and fraud.



Communication:

Update on Kent police local presence

We invited Kent police to a police surgery in July and August. Residents had an opportunity to speak to a police rep both online and face-to-face and an Ashford NHW rep. We hope to have more surgeries in the future, 2 or 3 times/year depending on police availability. Thank you to the police rep, NHW rep and residents for raising concerns about crime. Remember always report crime using the details at the end of this update. There are various Neighbourhood Watch websites you can register with to receive alerts and updates:

■ **E-watch.co.uk** <https://www.e-watch.co/>

How to register –go to: <https://www.e-watch.co/register.php> then add your e-mail address and click on 'Ashford' then 'Rolvenden and Teterden West'

■ **How to join Neighbourhood Watch:** If you used to receive the updates via Rolvenden update Mail chimp, please re-register to join Neighbourhood Watch: <https://www.ourwatch.org.uk/joinNW>. We have now set up the new Rolvenden Neighbourhood Watch scheme which has been approved.

■ **My community Voice – Kent.** You can register to receive alerts about the local area: <https://www.mycommunityvoicekent.co.uk/>

There have been some more positive developments with regard to recent incidents and we asked Rolvenden Parish Council to raise residents' concerns as an agenda item at the 15 August council meeting to ask for more support from the police.

And this month we take a look at some of the frauds around:

1. Courier Fraud urgent alert

We have received reports from residents in Maidstone of being cold called by person's stating that they were from Westminster Police and that a person had been arrested with their cards. However, the calls were SCAMS. If you are ever asked to withdraw cash by the police or your bank or to hand over your bank cards or assist with an investigation by buying and handing over valuable items, in particular, Gold – STOP, IT'S A SCAM. The Police or your Bank will never ask you to do this

2. Fake Text messages impersonating family members

We have received several reports recently of Kent residents being target with fake messages impersonating family members requesting financial assistance. However, the requests are scams.



Preventing fraud

Together, let's stop scammers. 

Remember, ABC:

-  never Assume
-  never Believe
-  always Confirm

Get the latest scam advice:  [@KentPoliceECU](https://twitter.com/KentPoliceECU)



They will say that they are texting from a new mobile number as their phone was lost or damaged and will then ask for money to purchase a new phone or claim that they need money urgently to pay a bill.

The criminal will supply their bank details for payment with some criminals coming back on multiple occasions until the victim realises they have been scammed.

How to protect yourself?

If a family member or friend makes an unusual request via text, email or WhatsApp, always call the person to confirm their identity.

You can report suspicious text messages by forwarding to 7726 and suspicious emails to: report@phishing.gov.uk



3. Royal mail email scams

Royal Mail scam emails reported over 5,000 times. The email will state that you have missed a delivery and that a parcel is waiting to be redelivered and asks you to click on a link.

However, it is all a scam and takes you to a realistic website under the control of the criminals where they

will look to steal your personal and financial data. Always report suspicious emails by forwarding them to: Report@phishing.gov.uk

If you think that you may have been a victim of any of these frauds or other type of scam, then contact your Bank immediately, which you can do by calling 159 and report it to Action Fraud at www.actionfraud.police.uk or call 0300 123 2040.

For further information about Fraud, visit our website at Advice about fraud Kent: <https://www.kent.police.uk/advice/advice-and-information/fa/fraud/>

Siân Reeves,

Rolvenden Neighbourhood Watch

Reporting crime to the police

Serious crimes in progress dial 999, other incidents via 101 (phone) or online using Live Chat: <https://www.kent.police.uk/contact/af/contact-us/>

Hearing or speech impairments. If you are deaf or have a speech impairment and you've pre-registered with the emergency SMS service, you can use the textphone service: 18000 or text 999.

Making our communities tick...

Understanding the Local Plan and the Neighbourhood Plan

Ashford Borough Council (ABC) is the planning authority and the decision-making authority that determines planning decisions for Rolvenden, the Layne and Newenden. There are some notable exceptions for large-scale infrastructure projects when the Government makes decisions and Kent County Council also has a limited role.

ABC are currently undertaking preparations for a new Local Plan (LP) which will guide and determine development across the entire Borough until 2040. The LP is a legal document required by central government and must abide by national planning legislation and guidance.

Parish Councils were invited to draw up a Neighbourhood Plan (NP) setting out 'hyper-local' guidance and objectives in 2012.

Rolvenden did so and the Parish Council has publicly committed to updating it to reflect new planning legislation and the emerging ABC's Local Plan. Newenden did not produce a Neighbourhood Plan back in 2012, but the Parish Council is looking to produce one now.

Insofar as local residents are given a say over what gets built and where in their communities, this is through Local Plans & Neighbourhood Plans. It remains vital, of course, to scrutinise planning applications as they come forward - and these are discussed monthly at the Parish Council and comments submitted to ABC where the bulk of decisions are made. Residents can also submit comments individually but only those with 'planning weight' will be considered.

But residents cannot appeal planning decisions - only applicants can.

And their only option is an extremely expensive judicial review process with incredibly tight timescales and very narrow grounds to object once a decision has been made by officers at ABC or by ABC's Planning Committee.

The full timetable for the Local Plan process is set out in detail on ABC's website [www.Ashford.gov.uk] along with details of the full Public Consultation. It was great to see so many residents at ABC's recent information session at Tenterden Leisure Centre.

We must be part of the formal Public Consultation when it happens and take every opportunity to make our voices heard where it counts.

I can always be contacted on my email (Kate.walder@ashford.gov.uk) or my mobile (07389110611) to discuss any planning concerns or issues and any other matters I can assist with. So do get in touch if you require further information.

Organisations here to help

EC30, a coffee shop and so much more! For more information
email: info@ec30.co.uk , also see www.ec30.co.uk. EC30,
Recreation Ground Rd, Tenterden.

Open: Mon- Fri 9am – 4pm; Sat 9am – 3pm

The Tenterden Family Foodbank EC30 times as above.

Food boxes for people suddenly in difficulty due to
late credit payments, unexpected bills, loss of job etc.

info@ec30.co.uk / 07919 381827. Emergencies only please call:
07919 381827 / 07805 840493

The Old Schoolhouse Larder supporting vulnerable families with children
finding it difficult to provide meals every day. Open Fri, 9 to 11am,
selection of nonperishable groceries and household & hygiene products.
Vouchers allowing families to select fruit & veg from the Tenterden Friday
Market and from the Market Square Farm Butcher also available.

Tenterden Social Supermarket Pop Up Shop. See next page for details
The Shop will be at Highbury Hall between 1:30 and 2:30pm
on the following Tuesdays:

September 3rd, September 17th, October 1st



Kent Savers for affordable loans www.kentsavers.co.uk

Regular Events

KCC Mobile Library Service visits Rolvenden every 2 weeks on a Tuesday:

- High Street between 11:30am and Noon
- Monypenny between 12:10 and 12:55pm

To join phone: 03000 41 31 31

For those living with short-term memory loss and their supporters

- Memory Café and Friends every Friday

Meets every Friday 2 – 4pm at St Andrews Church Hall,
Ashford Road, Tenterden

- Musical Memories meets every Tuesday 10:45am – 12 noon
Highbury Hall, Highbury Lane, Tenterden, a singing for health group.

- Monthly Lunch Club Meets 4th Wednesday 12:30 for 1:00pm
Little Silver Hotel, St Michaels Tenterden.

For all 3: Contact Jan Bridger Tel: 01580 762932 Mob: 07445971791

Parkinsons Café – mutual support for people affected by

Parkinson's including family, friends,

partners and carers. Meets every third Monday 10:30 to noon
at the EC30 Tenterden Contact Christine Endersby 01580 764046

CARM Rolvenden Meeting Point, every second Wednesday 10:00am
to noon in Monypenny Lounge, drop in and meet friends old and new.

<https://carmromneymarsh.org.uk/>

TENTERDEN SOCIAL SUPERMARKET



Repton
Community
Trust
Mobile
Shop

The Mildred Trust
Rural Community Companion in Action

ANNOUNCING

Repton Community Trust in partnership with The Mildred Trust are pleased to announce the launch of a new social supermarket for Tenterden. A fortnightly pop up shop at Highbury Hall Tuesday afternoons 1.30-2.30 (see reverse for dates).

We will be travelling from our Ashford base in our electric van; full to the brim with a selection of cupboard food, toiletries, and cleaning products for you to choose from.

As a social supermarket, we are able to offer products at a discounted rate. To make sure we have enough for everyone, each customer can pick out up to £20 worth of items at each shop session.

You pay £1.50 for every £5 worth, so the maximum £20 shop costs just £6. On average this equates to 3 shopping bags.

WHERE TO FIND US

Our pop-up shop will be with you on alternate Tuesdays at:
Highbury Hall, Highbury Lane, Tenterden TN30 6LE



Repton Community Trust
Charity number 1169444
reptonct.uk

Repton Ave, Ashford TN23 3RX
01233 808023



repton
community
trust

Refuse Collection

Waste food bins, small black with orange lid, are emptied weekly. All other bins, grey, green and brown are emptied fortnightly. To see which of your bins are emptied when type 'Ashford BC Find my bin' into your web browser. You have 2 search tools:

- Grey (household) or Green (recycling)
- Brown (Garden refuse)

You can also download a calendar.

Collection dates do not vary through the year except across the Christmas New Year Holiday season.

Please keep an eye out for neighbours who may not be connected to the web. If neighbours are not getting the bins right have a friendly word and tell them which bins to put out when.

For new arrangements on such things as clothes, shoe and electrical items please see the Ashford BC – How do I dispose of?

- Yellow sacks, where supplied, will be collected weekly
- For all queries about recycling or waste disposal:

On-line, see ABC website: www.ashford.gov.uk/waste

Telephone ABC on Tel 01233 330646

NEWENDEN PARISH COUNCIL

www.newenden-pc.gov.uk/

Parish Clerk: Mrs Lauren Dobson.

C/o Carpens, Hobbs lane,

Beckley. East Sussex, TN31 6TT

Telephone: 01797 260364

e-mail: enquiries@newenden-pc.gov.uk

Parish Council will meet at 7:00pm

Tuesday September 3rd in St Peter's

ROLVENDEN PARISH COUNCIL

www.rolvendenparishcouncil.org.uk

Parish Clerk: Mrs Julie Goldsmith,

5 Artisan Road, Headcorn, TN27 9AZ

Telephone: 07900 693572

email: rolvendenclerk@gmail.com

Parish Council will meet at 7:30pm

Thursday September 19th

in Rolvenden Village Hall

Members of the public have a statutory right to attend as observers. At the discretion of the Parish Council Chair people may be invited to speak.



Parish Magazine Essential Information:

Articles and supporting photographs: email to judyannvinson@gmail.com.

Photos for the cover should be emailed as a jpeg in colour or monochrome to Trevor Lodge on stmaryrolv@aol.com.

To keep the cover photos in tune with the month, Trevor likes to keep seasonal photos on hold waiting for the season to come round the following year. Any keen photographers who want to contribute, please send your photos to Trevor.



THE DEADLINE FOR THE OCTOBER ISSUE

IS 5:00pm TUESDAY 17TH SEPTEMBER

Note for distributors: ☆ Rolvenden Magazines available for collection on Saturday 28th September. ☆ Newenden

Magazines available for collection on Friday 27th September.

The online version will be available from 1st October accessed via the Parish Council websites for Newenden and Rolvenden Parish Councils, for which arrangement we are most grateful. *Judy V*



Justine Oliver Foot Care Practitioner



Home visits, nail trimming, corns, calluses, hard skin, thickened nails, and more

Justine Oliver - Telephone: 07760 340119

email: justineoliver.fhp@gmail.com

Fully insured ~ Registered ~ DBS checked



THE GREAT BARN, HALDEN PLACE, ROLVENDEN

A magnificent 18th century barn, full of character and rustic charm offering couples the unique opportunity of a bespoke wedding or reception in the rolling farmlands of the beautiful Hole Park Estate.

Registered with KCC for Civil Ceremonies

www.greatbarnweddings.com

info@greatbarnweddings.com

Hole Park Estate, Rolvenden, Kent. TN17 4JA. 01580 241344

The White Hart, Newenden

A family run business for the past 24 years



Steak Wednesdays

2 x dry aged 10oz steaks & a bottle of house wine **£50**

Live Music in the Garden

See Facebook and Instagram for what's on!

Open Mic every other Thursday

See Facebook & Instagram for the next one!

Hope to see you soon!

The White Hart, Rye Road, Newenden, Kent TN18 5PN

Email: reservations@thewhitehartnewenden.co.uk

Tel **01797 252166** www.thewhitehartnewenden.co.uk

K Jones Electrical

Commercial • Domestic • Industrial

Jones Family Electricians Trusted Locally
For Over 40 Years NIC/Eic Accredited



.Landlords, home buyers electrical installation safety certificates.
. Free estimates for rewire refurbishment, new build projects, Solar PV AND CCTV
Call for quote/estimation on **01580 848118** kevin.kjoneselectrical@gmail.com

Call for a Free quote on **01580 848118** kevin.kjoneselectrical@gmail.com



James Dyer

Cabinet Making
&
Carpentry

Product & Furniture Design BA (Hons)
City and Guilds 5780 – 30 Level 3 Diploma
in Furniture Making and Design.

Jamesdyerdesigns@outlook.com
www.jamesdyerdesigns.com
07701014338

CAD
Design & Machining services available.

RYE
SCHOOL of 
ENGLISH UK

MATHS AND ENGLISH TEACHING & TUTORING

**Rye School of English
Rolvenden Layne:
One to One or Small Groups
Online Zoom/Skype or Face to Face**

Primary & Secondary

KS1&KS2, 11+, SATS, GCSE,
A Level & Further Maths, TESOL.

Teachers:

Julie Wren - BA (Hons) CEEd. (City & Guilds)
TESOL (Trinity) Diploma TESOL (Canterbury)

Helen Walton - BSc Mathematics (Kings)

Dr Tim Wren - (Dr of Mathematics
and Engineering)

Enquiries:

T: 01580 243210

E: julie.wren@frogsholefarm.co.uk

W: www.ryeschoolofenglish.com

The Ewe & Lamb A Proper Village Pub



**Open 7 days a week
serving traditional pub
food & a fine
selection of real ales.**

**Check out our website
or social media for
more information.**

www.theewandlamb.co.uk

01580 241429

the **Unforgettable**
AGENT

LETTING

SELLING

ACQUIRING

VALUING

**SHOPS • OFFICES
FACTORIES • LAND
WAREHOUSES
INVESTMENTS**

**SURVEYS &
VALUATIONS**

LEASE RENEWALS

RENT REVIEWS

01825 764488
info@lawsoncommercial.co.uk

LAWSON
COMMERCIAL
CELEBRATING 30 YEARS
EXCELLENCE

www.lawsoncommercial.co.uk

THE STAR
ROLVENDEN
A Traditional Village Pub

- ◆ A warm and relaxed atmosphere serving a fantastic choice of Cask Ales, Wines, and Lagers.
- ◆ Tasty Home made Food by resident Chef's Lyn & Yvonne. Served every day, with Breakfasts offered on Saturdays & Sundays from 10.00am.
- ◆ The Star is a family orientated, pet friendly Pub, where well behaved Parents & Grandparents are welcome too!
- ◆ Good Covid-19 Protocols in place, Staying Safe together at The Star

The Star, 30 High Street, Rolvenden, Kent. TN17 4LN.
Tel: 01580 241369

W: www.starrolvenden.co.uk
E: starrolvenden@btconnect.com



Refurbishments, Renovations, Restorations

Carpentry – Joinery – Plastering – Tiling – Kitchens – Bathrooms – Landscaping
Brickwork – Traditional restorations

Jason Hollands leads a small team of professional, reliable and conscientious craftsmen with a reputation for quality work. We understand that undertaking a renovation or building project is a big decision. We pride ourselves on our clean and tidy sites, ensuring that your project is delivered with as little impact to you and your property as possible.

Lower Winser Cottage, Mounts Lane, Rolvenden Layne, Cranbrook, Kent TN17 4NN
Phone 07787 524836 jasonhollands@outlook.com



Garden Construction
and Landscape
Specialists

Professional Garden Maintenance

ESTABLISHED FOR OVER 50 YEARS

'We are garden design and landscaping specialists of choice for properties throughout Kent & East Sussex, taking pride in creating the gardens of our clients' dreams.'

SANDHURST: 01580 850394
www.kibblewhitegardens.co.uk

Whatever you want to store...

...for whatever reason – business, house sale and purchase not coinciding, travelling, house building work, paperwork overload or just “de-cluttering” to sell your house more quickly – we offer a friendly and flexible service in Cranbrook.

With competitive rates, secure storage all on one level and hassle free 24/7 access, contact us now!



01580 713231
www.barn-store.co.uk



Your local installers and repairers of:

Automatic Gates

We can install, repair and offer maintenance on all automatic gates

We also supply and fit high quality CCTV systems

Call Dan on 01580 242901
www.afsecurity.co.uk



Elevate your outdoor space with premium materials from

Order online:

www.gardenscapedirect.co.uk

Tel: 01797 253666

Email: sales@gardenscapedirect.co.uk

Gardenscape





BUTLER HOUSE CARPETS & RUGS



We also offer a bespoke rug service

High Street, Cranbrook, Kent, TN17 3DN

01580 712149

www.butlerhouse.co.uk

Webb's (Tenterden) Ltd.

45/51 High Street, Tenterden 01580 762132

✿ DIY Garden Tools ✿ Mowers (Sales and Repairs) ✿

✿ Cookware Specialists ✿ Garden Furniture ✿

✿ Table Furnishings ✿ Tools ✿ Bed Linen ✿

✿ New Babywear Department ✿ Gifts with a difference ✿

www.webbsoftenterden.com

mail@webbsoftenterden.com



**We're passionate
about creating and
maintaining beautiful
outside spaces.**



Tompsett Landscaping

A well designed and maintained garden or outdoor space can do amazing things for your home or business.

Whether you want to make the most of your garden, give your customers an excellent experience or even add value before a sale Tompsett Landscaping are the landscaping company to make it happen.

We are a Kent based landscaping company operating throughout Kent, London and the South East providing a whole host of landscaping, garden and grounds maintenance services to commercial companies, private clients and parish councils.

Please contact us today for your free no obligations quotation

✉ info@tompsettlandscaping.co.uk

🌐 tompsettlandscaping.co.uk

📞 Rob Tompsett: 07961637275

📞 Nick Tompsett: 07746672946



CRANBROOK MUSEUM AND LOCAL HISTORY SOCIETY C.I.O.

Open April to October. Tuesday to Saturday 2pm - 4.30pm
also every Sunday in August

VISIT FREE

Donations welcome

Three floors of exhibits in 15th Century building with cottage garden

'Wheels of Time'
Children's History Detective Trail

EXHIBITIONS THIS SUMMER 2024

APRIL and MAY

Life and times of philanthropist John Passmore Edwards
1823 - 1911

JUNE and JULY

Revisiting the history of Cranbrook Primary School

AUGUST, SEPTEMBER and OCTOBER

Digging Deeper - A look at headstones
in St Dunstan's churchyard

Carriers Road, Cranbrook, Kent TN17 3JX
www.cranbrookmuseum.org Facebook @cranbrookmuseum



WHERE WATER GARDENING COSTS YOU LESS!

- Thousands of high quality tropical and fresh water fish
- Huge range of aquatic plants with lilies, marginal and bog plants
- Half price pond pumps and pond liners



- Vast range of pre-formed ponds
- Hundreds of ornamental statues
- Beautiful walk around display gardens
- Coffee shop and free car park

Talk to us on 01580 241771

ON THE A28 1 MILE SOUTH OF ROLVENDEN



VALE & MARSH

As a licensed Propertymark Agent, at Vale and Marsh (formerly Weald Property) we possess extensive knowledge and experience in every aspect of residential property. It's what we've been doing since 1985 and it's why we've been so successful. Our friendly and committed team are incredibly passionate and conscientious, serving our clients impeccably, offering sound and expert advice on buying, selling, letting and property management. Our highly motivated team are dedicated and driven, working with energy, conviction and passion. We ensure all transactions are handled with the utmost professionalism and skill, because we feel outstanding customer care matters.

**To put your property in safe hands,
please call Alex Norwood Hill on 01580 242700. www.valeandmarsh.com**

THE WRIGHT WAY

Painters & Decorators



Our team are fully qualified and use modern painting systems to ensure we bring you a flawless finish every time. On the larger jobs our team will work together, ensuring you get your home back sooner.

Tel: 01580 713599

www.the-wrightway.com

Mob: 07856 947840



Re-Spect Hair Studio

Rolvenden's first
Sustainable,
Eco-Friendly Salon.

For everyone - Men, Women
& Children are all welcome.

Trafalgar Barn, Regent Street,
Rolvenden 01580 243041
Instagram: re_specthairstudio



A GARDEN FOR ALL SEASONS

Beautiful privately
owned gardens open from
1st April until 31st October

Hole Park Estate
Rolvenden Cranbrook Kent
TN17 4JA

Telephone 01580 241344
Email info@holepark.com
www.holepark.com



Try our professional Home News Delivery service

**New customer introductory
offers available**

Have your paper delivered before you go to work and
read it with your breakfast!

- ✓ Early delivery - before 6.30am (7.30am at weekends)
- ✓ Excellent communication - phone or email ALWAYS responded to
- ✓ Different billing options available
- ✓ All national and local newspapers available to order
- ✓ All magazines available to order
- ✓ Well established reliable company with over 4,400 customers

**Place your order today by telephone on
01580 763183**

or email us at mail@jackiesnews.co.uk
or go to www.jackiesnews.co.uk/place-your-order



Lambert & Foster

PROPERTY PROFESSIONALS FOR 120 YEARS

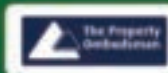


Looking to sell or let?

Book your market appraisal and view the latest properties at www.lambertandfoster.co.uk

Sales 01580 712 888
Lettings 01580 712 234

Weald Office, 39 High St, Cranbrook, Kent TN17 3DN
OFFICES ALSO AT PADDOCK WOOD, HYTHE & WADHURST



arla | propertymark





Lineage Advertisement £18 for a year.
Pro rata to December 2024
Email judyannvinson@gmail.com

.....

HEATING ENGINEER

Mark Clifton Plumbing and heating,
GASSAFE and OFTEC registered.
07831749725 mark@cliftonheat.co.uk
Natural gas and oil heating, Boiler changes, cylinders, radiators, bathrooms
and kitchen works.

.....

HOUSE CLEARANCE

Cindy's Antiques 07753 836305

.....

MATHS TUTOR

11+, SATS, GCSE and A level
Liz Hopkins BSc(Hons) PGCE QTS CELTA
077481 30134 or Email: liz@tenterdentuition.co.uk Now offering online tuition

.....

KNOLL PROPERTY SERVICES

All aspects of decorating interior and exterior, wallpapering a specialty.
Also carpentry, window, and door renovation. Wall and floor tiling.
City & Guilds (decorating). Fully insured. Call Alan for a quotation and advice.
01797 458164. Mobile 07804969256

.....

CLAIR'S FOOT CARE

Foot Health Practitioner
Clair Simpson Dip CFHP, MPSPract, Mar
Based in Wittersham Kent, Call 07443871266 or email clairsfootcare@gmail.com

.....

T.W. Fuggle & Son.

FUNERAL DIRECTORS



**CRISPIN & SIMON FUGGLE
YOUR LOCAL INDEPENDENT
4TH GENERATION
FAMILY FUNERAL DIRECTORS**

**ALL ARRANGEMENTS UNDERTAKEN
(IN THE PRIVACY OF YOUR OWN HOME IF WISHED)**

PRIVATE CHAPEL OF REST

**PRE-PAID FUNERAL PLANS ARRANGED
WITH GOLDEN CHARTER**



www.twfuggle.co.uk



01580 763340



office@twfuggle.co.uk



01580 766003

20 ASHFORD ROAD, TENTERDEN, KENT. TN30 6QU



Golden Charter
Funeral Plans 

PROUD MEMBERS OF NATIONAL ASSOCIATION OF FUNERAL DIRECTORS

'My Village Store'

Telephone: 01580 241314



* Groceries * Fruit & Veg * Off Licence * Bacon
* Cheese * Delicatessen * Home Cooked Meats
* Tobacconist & Newsagent * Lottery



IN-STORE POST OFFICE Telephone: 01580 241245

Carpets & Floors

Carpet and Vinyl Flooring supplied and fitted.
Same choice as any shop but at up to half the price.



We can move your
furniture for you and
take away your old carpet

For free home sample viewing and estimates
please call Stuart or Lisa on 01424 855882 / 07734 659834
Email: bargainfloors@hotmail.co.uk

www.bargainfloors.co.uk

PROUD MEMBERS OF
Checkatrade.com
Where reputation matters

TENTERDEN ROOFING COMPANY

Specialists in Tiled Roofs
Old & Period Roofs – Clay & Slate
Leadwork & Chimneys
Conservation Roof Lights & Dormers

Tel: 01233 860301 • 01580 241000
07921 509564

71 Lower Road Woodchurch Ashford Kent TN26 3SG



hobbs
parker

Uncomplicated,
trustworthy and
confidential advice
if you are selling
or letting ■

Ashford: 01233 506260 Tenterden: 01580 766766

www.hobbsparker.co.uk